



THE LEADER IN MASS TRANSIT SECURITY LIGHTING  
&  
SPECIALTY LIGHTING PRODUCTS

# SPECIFICATION SUBMITTAL

## Series 84W

SINGLE LAMP CLOSED PRISMATIC ACRYLIC  
FORM WITH DIE FORMED WALL MOUNTING  
CANOPY AND TUBULAR ARM.

### MATERIAL

Husk, 20 gauge die formed steel.  
Extension Arm, .750 O.D. drawn CRS.  
Wall mounting base 16 gauge die formed steel.

### REFLECTOR

Clear prismatic molded micro cellular acrylic upper and  
lower segments, secured with clamp ring.

### MOUNTING

Wall mounted with appropriate hardware.

### ELECTRICAL

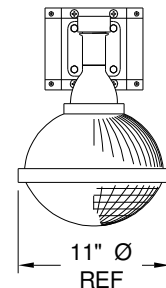
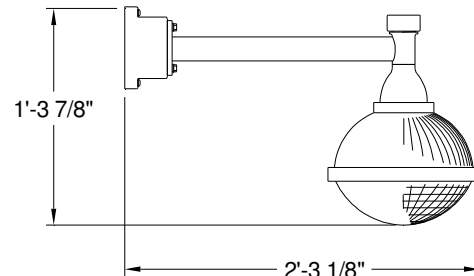
Electronic ballast per specification to match lamping  
selected. Socket, medium base porcelain 4 KVA rated.  
Ballast mounted in base. Code gauge internal wiring.

### FINISH

All metal parts post powder coated or electro-statically  
applied wet finish color as per specification. Custom  
exterior finishes available on special order.

### CERTIFICATIONS

UL listed and IBEW union made.



## ORDERING GUIDE

84W Series	No of Lamps	Lamp Type	Volts	Painted Finish	Options
	1	70W HID	120	AL - Aluminum WH - White CTBS - Color to be specified	GL - Cast glass two part globe <b>Fusing</b> GLR - Fast blow fuse GMF - Slow blow fuse